



ALASKA DIVISION OF HOMELAND SECURITY & EMERGENCY MANAGEMENT



SITUATION REPORT 22-336 • DECEMBER 02, 2022

Toll-Free 1.800.478.2337

Anchorage Area 907.428.7000

SEOC 907.428.7100

<u>SEOC Preparedness Level</u> Level 1 – Routine Operations	http://ready.alaska.gov	<u>National Terrorism Advisory System:</u> Read the NTAS Bulletin here
<u>Maritime Security (MARSEC)</u> Level:1-Minimum Appropriate Security Measures	WHO Novel Coronavirus Pandemic (COVID-19): 2019 Novel Coronavirus	<u>Alaska Military Installation Force Protection Level:</u> FPCON Bravo

(Significant changes from previous situation reports are in red.)

Significant Issues:

Stebbins Fire:

Yesterday the SEOC coordinated with Bering Straits Native Corporation, Alaska Voluntary Organizations Active in Disasters (AKVOAD), Food Bank of Alaska, Alaska Airlines Air Cargo and Bering Air to ship two pallets of relief supplies, including diapers, infant formula, bottled water and shelf-stable milk and food to Stebbins.

State of Alaska Department of Health (DOH)

The DOH is leading the State of Alaska COVID-19 Recovery, supported by the SEOC and other state departments as required.

For current COVID-19 information, see:

<https://covid19.alaska.gov/>

<https://www.cdc.gov/coronavirus/2019-ncov/index.html>

NTAS Bulletin

The U.S. Department of Homeland Security has issued an updated National Terrorism Advisory Bulletin. The updated bulletin can be viewed at the below link

To read current or expired advisories, click the link below:

<https://www.dhs.gov/national-terrorism-advisory-system>

Travel Alerts and Conditions

For current driving conditions dial 511 or link to <https://511.alaska.gov/>

Barry Arm Landslide / Tsunami Risk

For the latest information on the Barry Arm Landslide and Tsunami risk, click here:

[DGGs Barry Arm Landslide and Tsunami Hazard](#)

Recent Earthquakes

USGS Earthquake Information: <http://earthquake.usgs.gov/>

National Tsunami Warning Center: <http://tsunami.gov/>

Alaska Volcanoes

Cleveland Alert Level: **Advisory** and Aviation Color Code: **Yellow**

Great Sitkin Alert Level: **Watch** and Aviation Color Code: **Orange**

Pavlof Alert Level: **Watch** and Aviation Color Code: **Orange**

Semisopchnoi Alert Level: **Advisory** and Aviation Color Code: **Yellow**

Takawangah Alert Level: **Advisory** and Aviation Color Code: **Yellow**

For Alaska Volcano updates, go to: <https://www.avo.alaska.edu/>

Air Quality Index (AQI) Advisories

For the most up to date Air Quality Index Advisories:

<http://dec.alaska.gov/Applications/Air/airtoolsweb/Home/Index>

Spills of Oil and Hazardous Substances

The ADEC Spill Prevention and Response page is located at:

<http://dec.alaska.gov/spar/ppr/spill-information/response/>

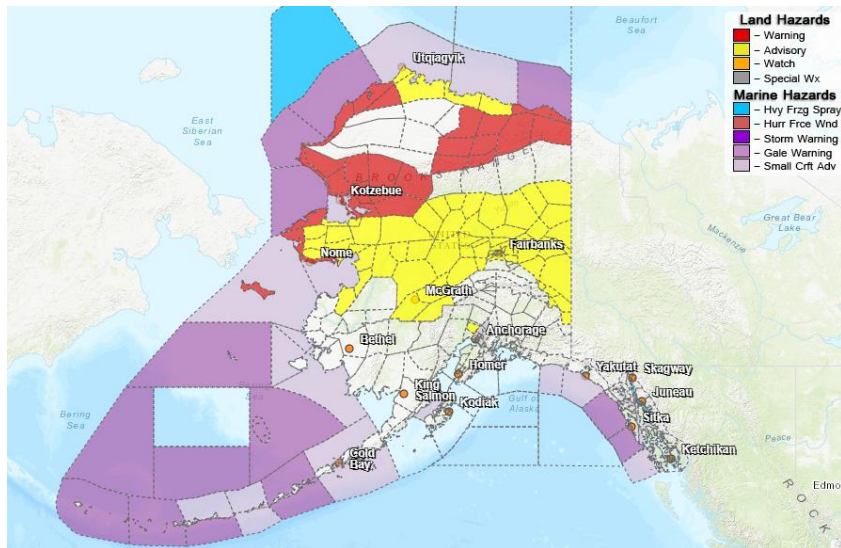
Alaska Cyber Security Information

State Employees may sign up for cyber security notifications and alerts at

<https://oit.alaska.gov/security>

CISA-Cybersecurity Services and Tools: www.cisa.gov/free-cybersecurity-services-and-tools

Significant Weather:



The following Winter Storm Warnings remain in effect:

- Baldwin Peninsula and Selawik Valley until midnight Saturday. Heavy mixed snow and ice precipitation is expected with a total accumulation of 2-4 inches.
- Southern Seward Peninsula Coast until midnight Saturday. Heavy mixed precipitation is expected. Total snow accumulations of 1 to 3 inches and ice accumulations of up to one two tenths of an inch.

- Western Arctic Coast until 6:00AM Saturday. Heavy mixed precipitation is expected. Total snow accumulations of up to one inch and ice accumulations of up to one tenth of an inch. Winds gusting as high as 50 mph.
- St. Lawrence Island and Bering Strait Coast until midnight. Heavy snow with periods of blizzard conditions and winds gusting up to 50 mph.
- Chukchi Sea Coast through midnight Saturday. Heavy snow with blizzard conditions with up to 8 inches of snow accumulation, 50 mph gusting winds and limited visibility.
- Upper and Lower Kobuk and Noatak Valleys until midnight Saturday. Heavy snow and blowing snow are expected with an accumulation of 8+ inches and winds up to 40 mph.
- Northeastern Brooks Range through 3:00PM Saturday. Heavy snow and blowing snow are expected with an accumulation of 8+ inches and winds up to 40 mph.
- Central Beaufort Sea Coast through 3:00PM Saturday. Heavy mixed precipitation. Additional snow accumulations of 5 to 8 inches and ice accumulations of up to one tenth of an inch and winds gusting as high as 60 mph.

The following Winter Weather Advisories have been issued:

- Upper the Central Interior, Middle Tanana Valley, Koyukuk Valley and the Yukon Flats until 6:00 P.M. Saturday. Up to 4 inches of mixed precipitation is expected.
- Northern Arctic Coast until 6:00 A.M. Saturday. Mixed precipitation is expected. Total snow accumulations of up to one inch and ice accumulations of a light glaze and winds gusting as high as 40 mph.
- Western Prince William Sound: Areas of blowing snow and reduced visibilities are possible along Turnagain Arm and across Portage Valley through Thursday.
- Northern and Interior Seward Peninsula from 6:00PM this evening through 6:00AM Saturday. Snow and blowing snow with accumulation up to 6 inches with wind gusts of 30 mph expected.

A Flood Advisory has been issued for the Susitna Valley until 4:30PM Friday. Cold temperatures have caused a rapid freeze up and ice movement on Willow Creek and area tributaries.

For more information and the most current weather, Watches / Warnings / Advisories go to: <http://www.weather.gov/arh>.

Avalanche Forecast:



There are areas of moderate risk near Valdez and Skagway.

Check the Avalanche Forecast Center closest to your area for the most up to date information on avalanche potential. <https://alaskasnow.org> or <https://www.weather.gov/afc/avalancheweather>

The Next Situation Report: will be 05 December 2022. A significant change in the situation or the threat level will prompt an interim report. This report is posted on the internet at <https://ready.alaska.gov/sitrep>.

To register for email distribution, go to <http://list.state.ak.us/mailman/listinfo/dhsem.situation.report>. Direct questions regarding this report to the SEOC at 907-428-7100 or seoc@alaska.gov